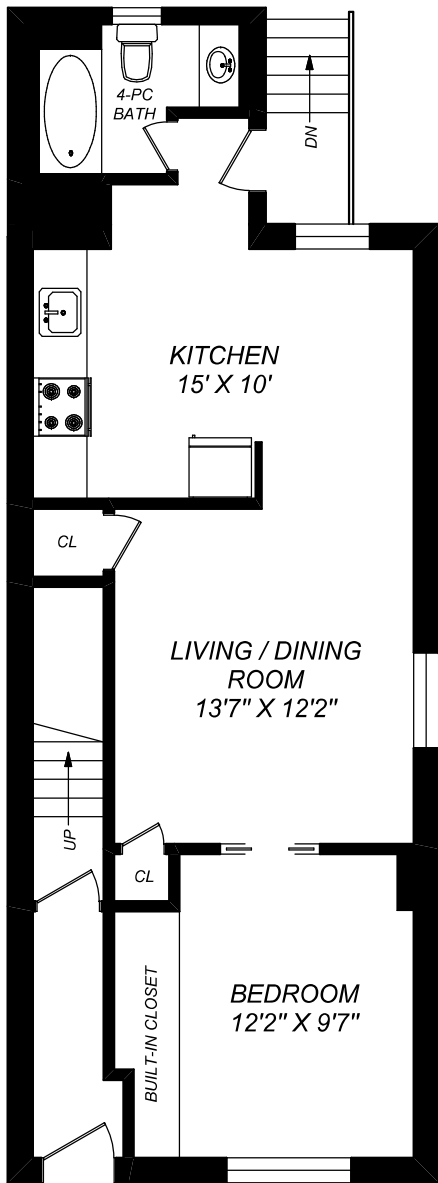
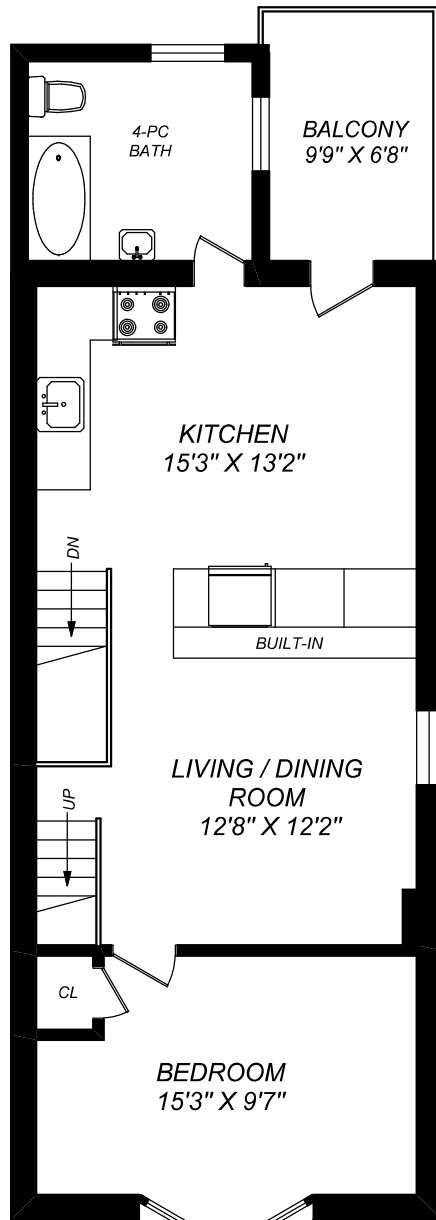


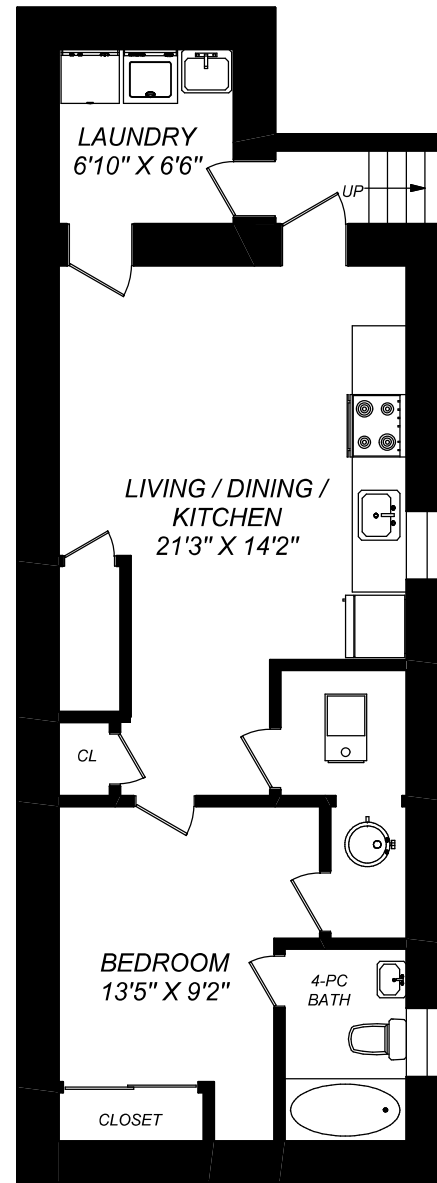
1407 LANSDOWNE AVENUE



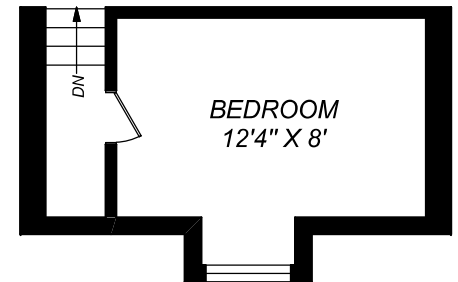
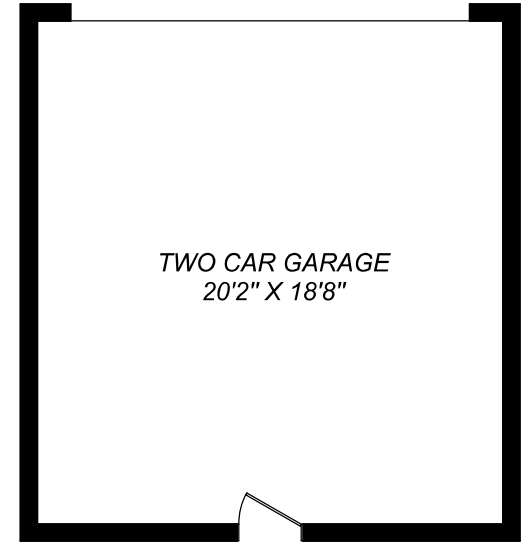
MAIN FLOOR
752 SQUARE FEET
(CEILING HEIGHT : 8'-6")



SECOND FLOOR
752 SQUARE FEET
(CEILING HEIGHT : 8'-2")



BASEMENT
752 SQUARE FEET



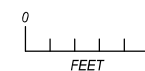
THIRD FLOOR
165 SQUARE FEET

Kate Watson

Broker

katewatson@katewatson.com

416-530-1100



truPlan

416 573 2096

E & O.E.

Floor plan may not be 100% accurate.