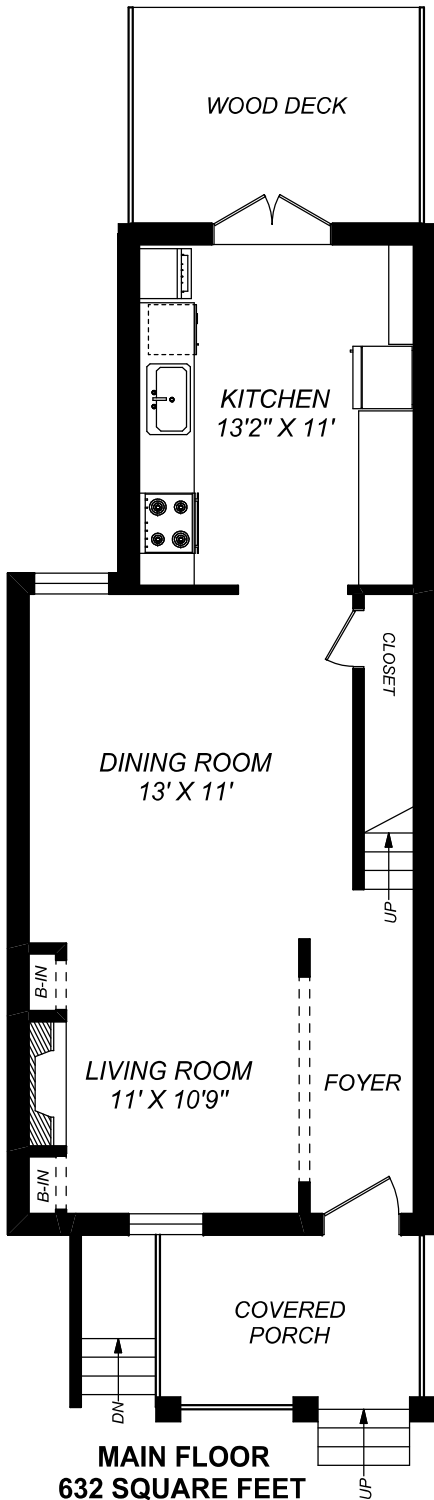
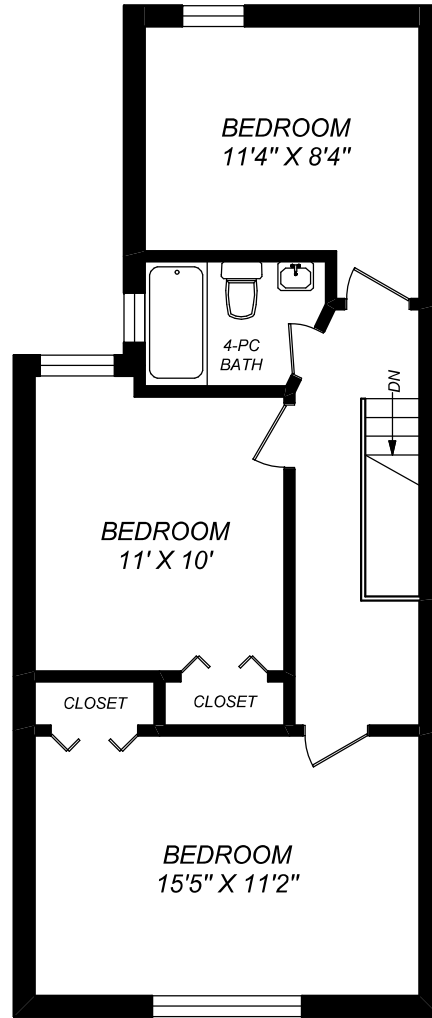


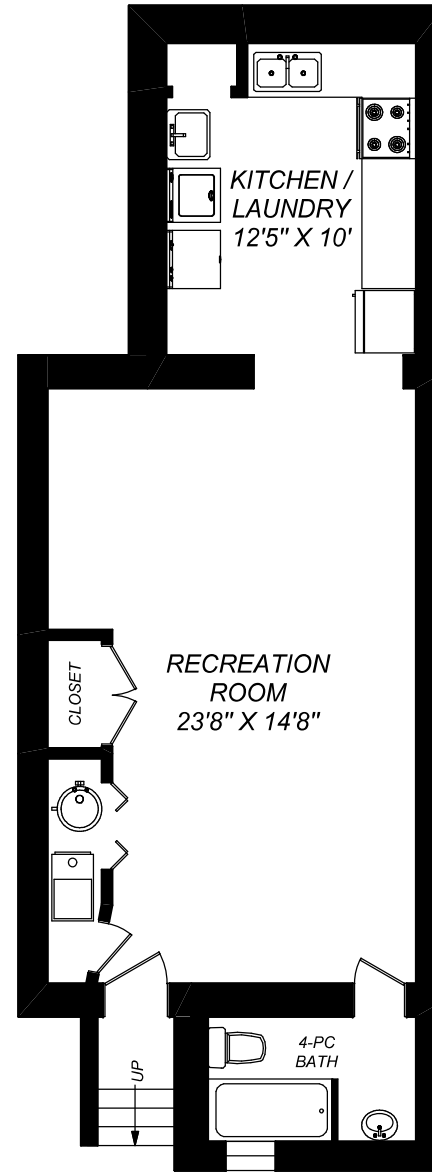
61 OSLER STREET



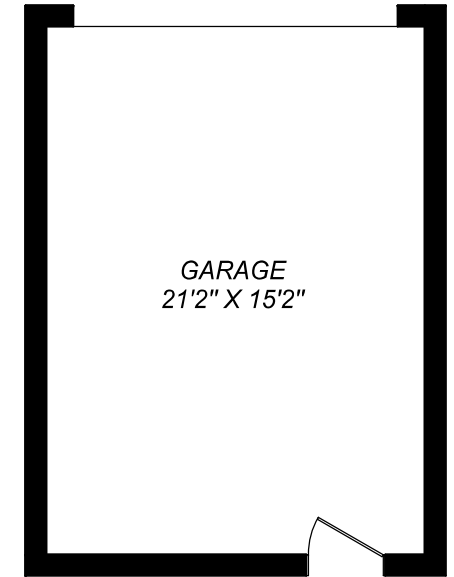
MAIN FLOOR
632 SQUARE FEET
(CEILING HEIGHT : 8'-8")



SECOND FLOOR
632 SQUARE FEET
(CEILING HEIGHT : 8'-0")



LOWER LEVEL
705 SQUARE FEET
(CEILING HEIGHT : 7'-0")



Kate Watson
Broker
katewatson@katewatson.com
416-530-1100



truPlan

416 573 2096

E & O.E.

Floor plan may not be 100% accurate.