

264 HAVELOCK STREET



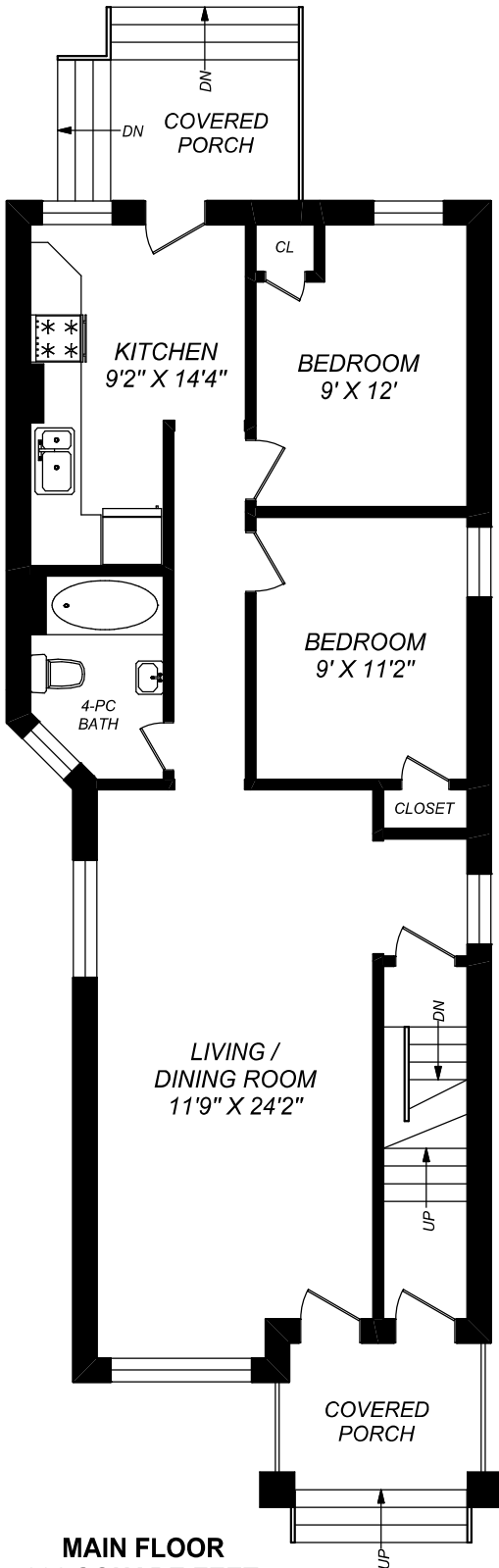
FEET

truPlan

416 573 2096

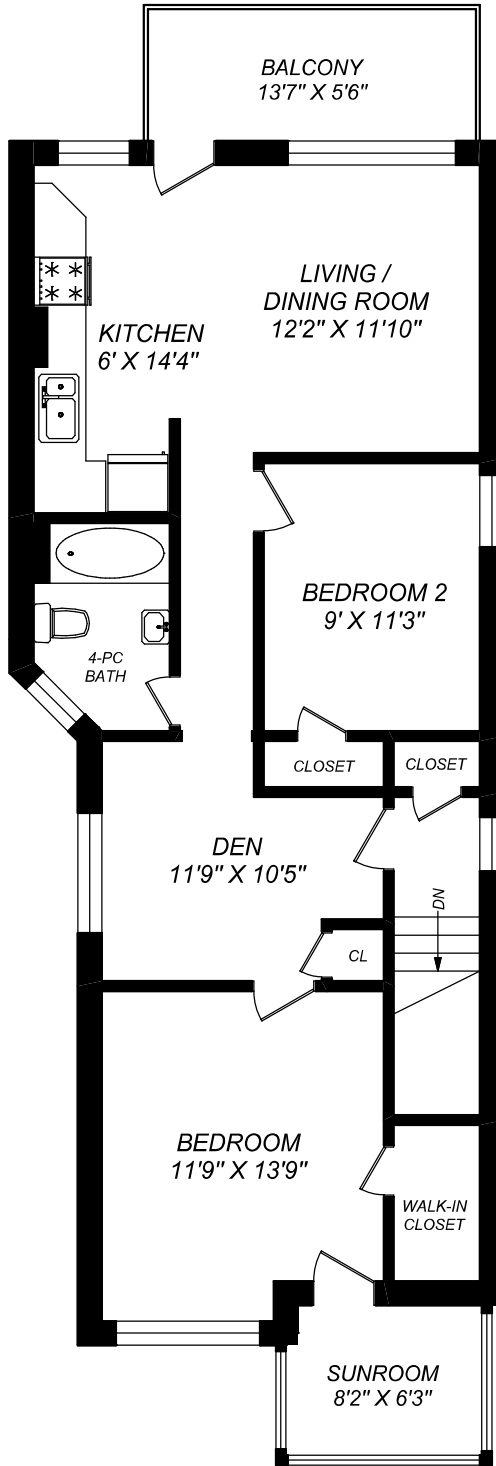
E & O.E.

Floor plan may not be 100% accurate.



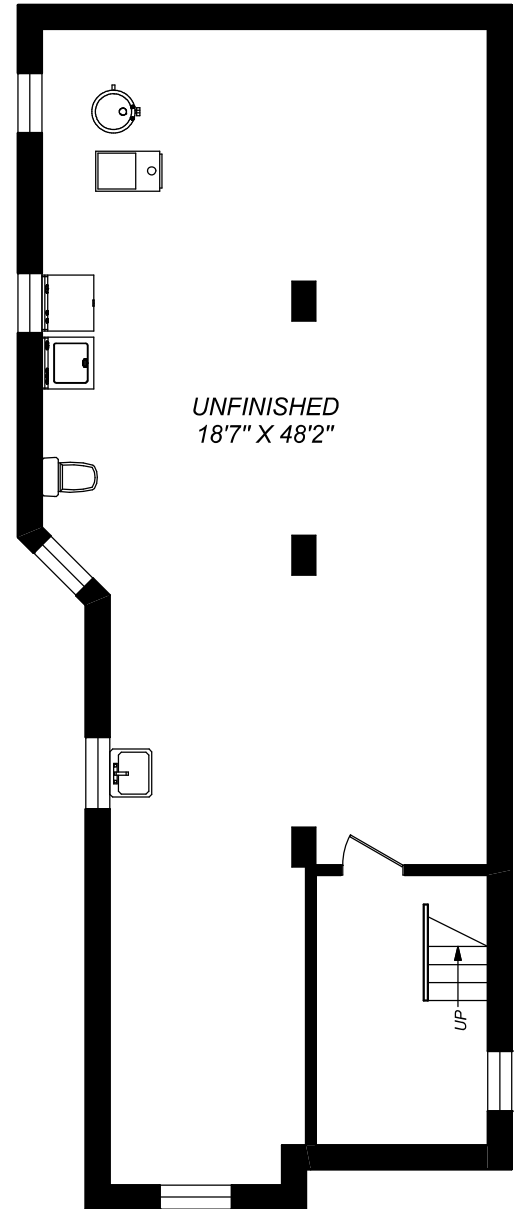
**MAIN FLOOR**  
936 SQUARE FEET

CEILING HEIGHT : 8'-3"



**SECOND FLOOR**  
936 SQUARE FEET

CEILING HEIGHT : 8'-3"



**BASEMENT**  
936 SQUARE FEET

CEILING HEIGHT : 6'-2"

**Kate Watson**

Broker

[katewatson@katewatson.com](mailto:katewatson@katewatson.com)

416-530-1100